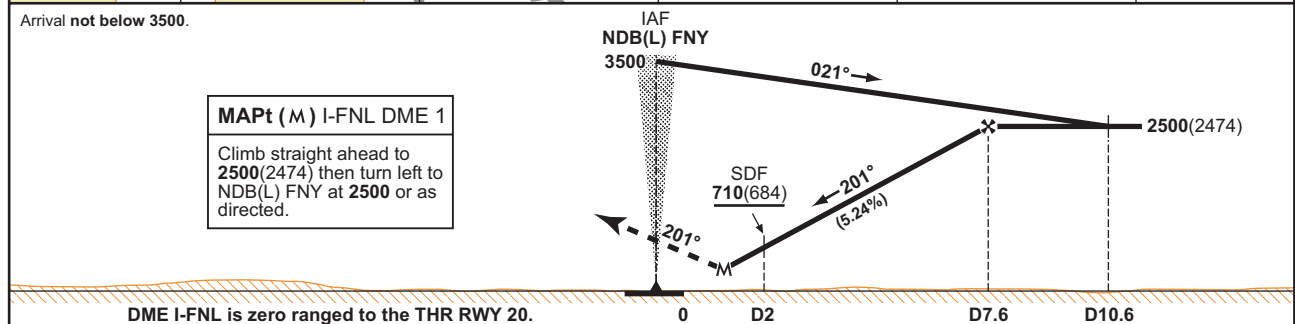
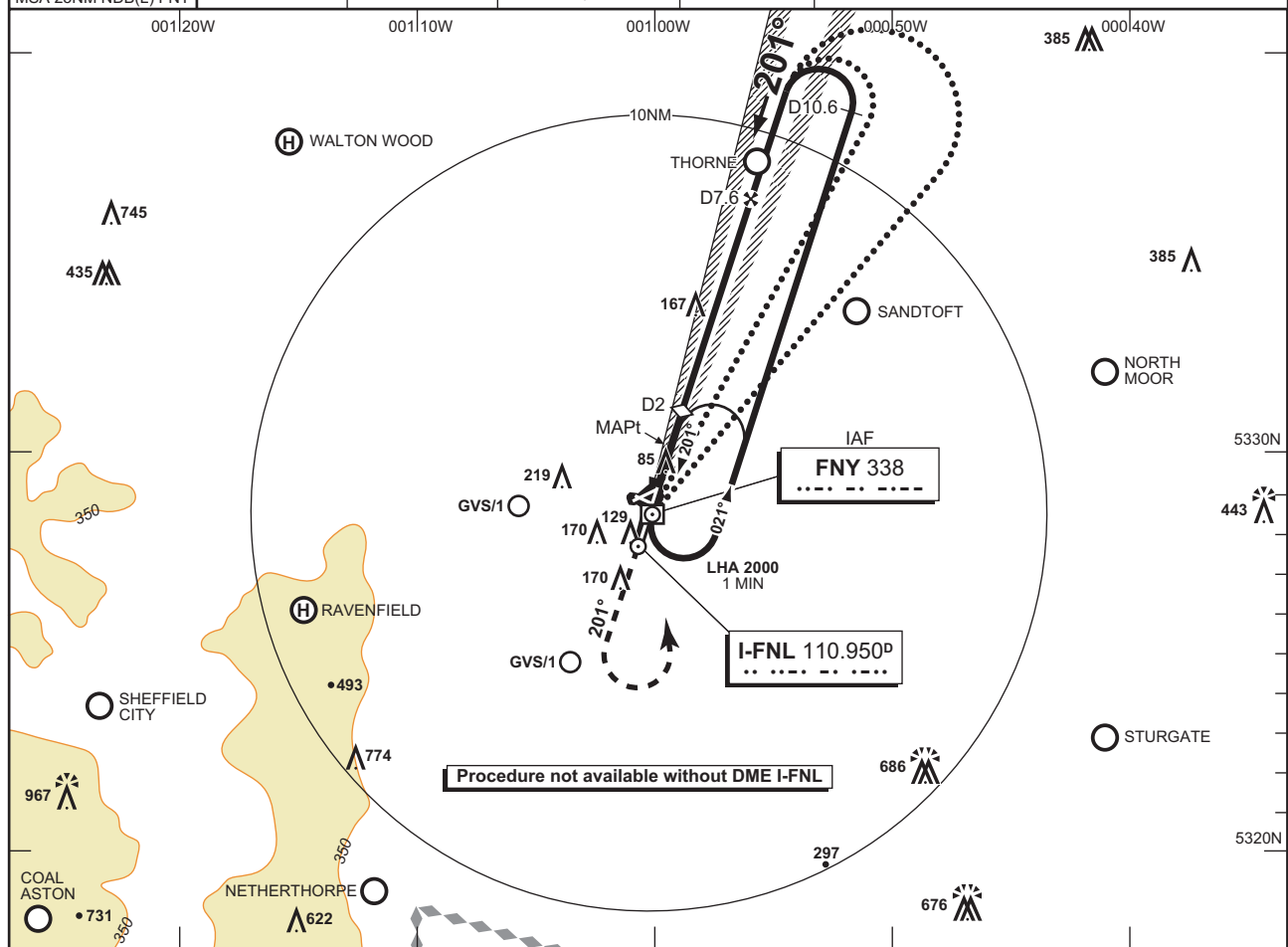


**EGCN**  
CAT A,B,C,D

AD ELEV <b>55FT</b>	THR ELEV <b>26FT</b>	TRANSITION ALT <b>3000</b>	VAR <b>3°W</b>
------------------------	-------------------------	-------------------------------	-------------------

**DONCASTER SHEFFIELD**  
**LLZ/DME/NDB(L) RWY 20**  
**I-FNL 110.950/FNY 338**

ATIS <b>134.950</b>	APPROACH <b>126.225</b>	RADAR <b>126.225, 129.050</b>	TOWER <b>128.775</b>
------------------------	----------------------------	----------------------------------	-------------------------



DME I-FNL is zero ranged to the THR RWY 20.

RECOMMENDED PROFILE				OCA (OCH)		VM(C) OCA (OCH AAL)	
Gradient 5.24%, 318FT/NM				PROCEDURE		TOTAL AREA	
DME I-FNL	ALT/HGT	G/S KT	RATE OF DESCENT FT/MIN	A	B	C	D
7	2310 (2284)	160	850	340 (314)	340 (314)	340 (314)	340 (314)
6	1990 (1964)	140	740	340 (314)	340 (314)	340 (314)	340 (314)
5	1670 (1644)	120	640	340 (314)	340 (314)	340 (314)	340 (314)
4	1350 (1324)	100	530	340 (314)	340 (314)	340 (314)	340 (314)
3	1030 (1004)	80	420	340 (314)	340 (314)	340 (314)	340 (314)
2	710 (684)						
1	390 (364)						

**ALTERNATIVE PROCEDURE**  
From overhead NDB(L) FNY (IAF) **not below 3500(3474)** fly outbound on NDB(L) QDR 032° (CAT A,B) or NDB(L) QDR 043° (CAT C,D) descending to **2500(2474)**. At I-FNL D10.6 turn left to establish on the localizer then continue as for main procedure

**NOTE** Aircraft will normally be required to hold not lower than **3500**. Lowest altitude to commence procedure from hold is **2500**.