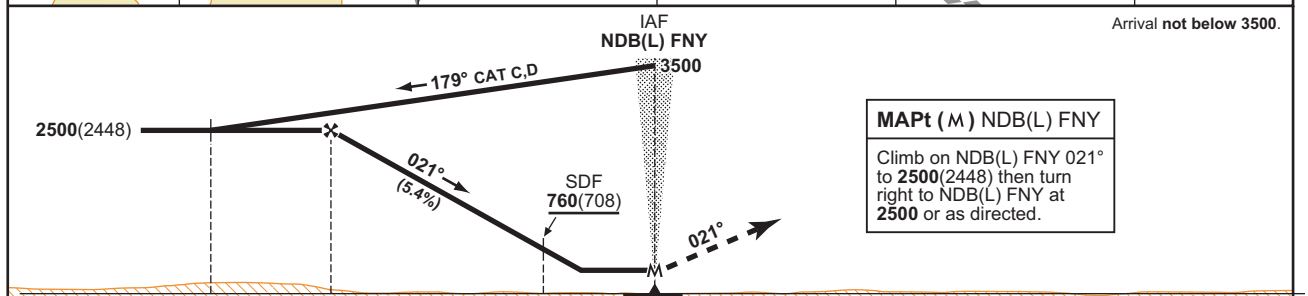
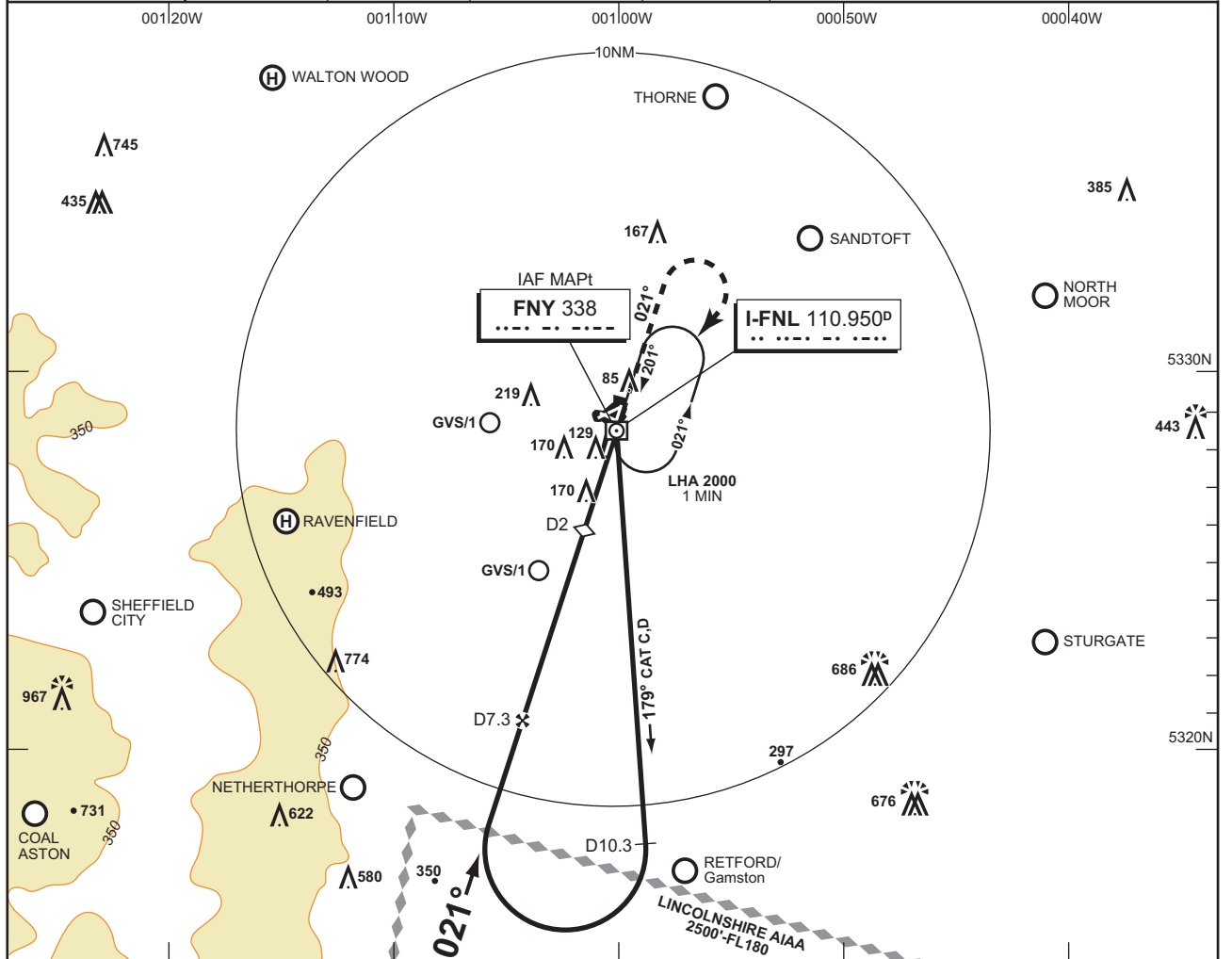


MSA 25NM NDB(L) FNY

**EGCN
CAT C,D**

AD ELEV 55FT	THR ELEV 52FT	TRANSITION ALT 3000	VAR 3°W
ATIS 134.950	APPROACH 126.225	RADAR 126.225, 129.050	TOWER 128.775

**DONCASTER SHEFFIELD
NDB(L)/DME RWY 02
FNY 338/I-FNL 110.950**



RECOMMENDED PROFILE		RATE OF DESCENT	DME I-FNL is zero ranged to the THR RWY 02.			
Gradient 5.40%, 325FT/NM			OCA (OCH)		VM(C) OCA (OCH AAL)	
DME I-FNL	ALT/HGT	G/S KT	FT/MIN	WITH DME	NO DME	TOTAL AREA
7	2400 (2348)	160	880	C 430 (378)	750 (698)	760 (705)
6	2070 (2018)	140	770			
5	1740 (1688)	120	660	D 430 (378)	750 (698)	760 (705)
4	1420 (1368)	100	550			
3	1090 (1038)	80	440			
2	760 (708)					
1	430 (378)					

AIRCRAFT UNABLE TO RECEIVE DME I-FNL
Notify ATC . Fly outbound for 2.5MIN on track 179° then establish on the FAT. Once established, descend to MDA(H).

NOTE Aircraft will normally be required to hold not lower than 3500. Lowest altitude to commence procedure from hold is 2500.

CHANGE NEW CHART. BEARINGS ARE MAGNETIC
AERO INFO DATE 13 DEC 04 INSTRUMENT APPROACH CHART - ICAO