

EGCN

CAT A,B,C,D

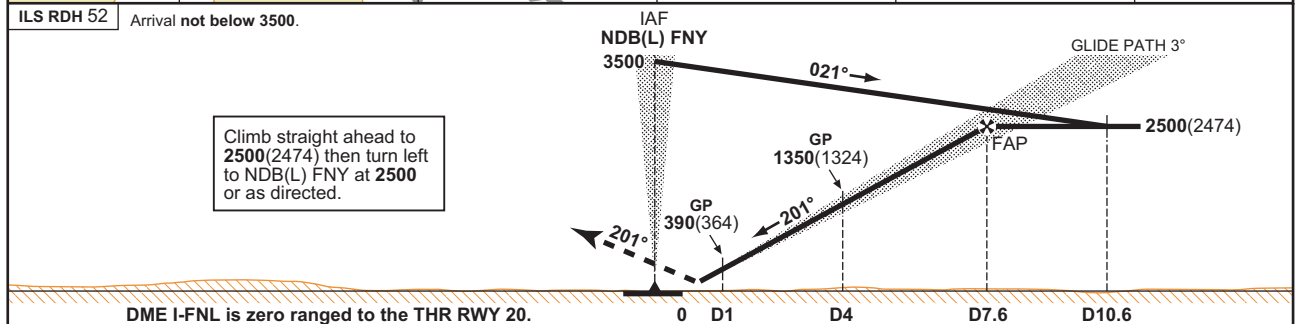
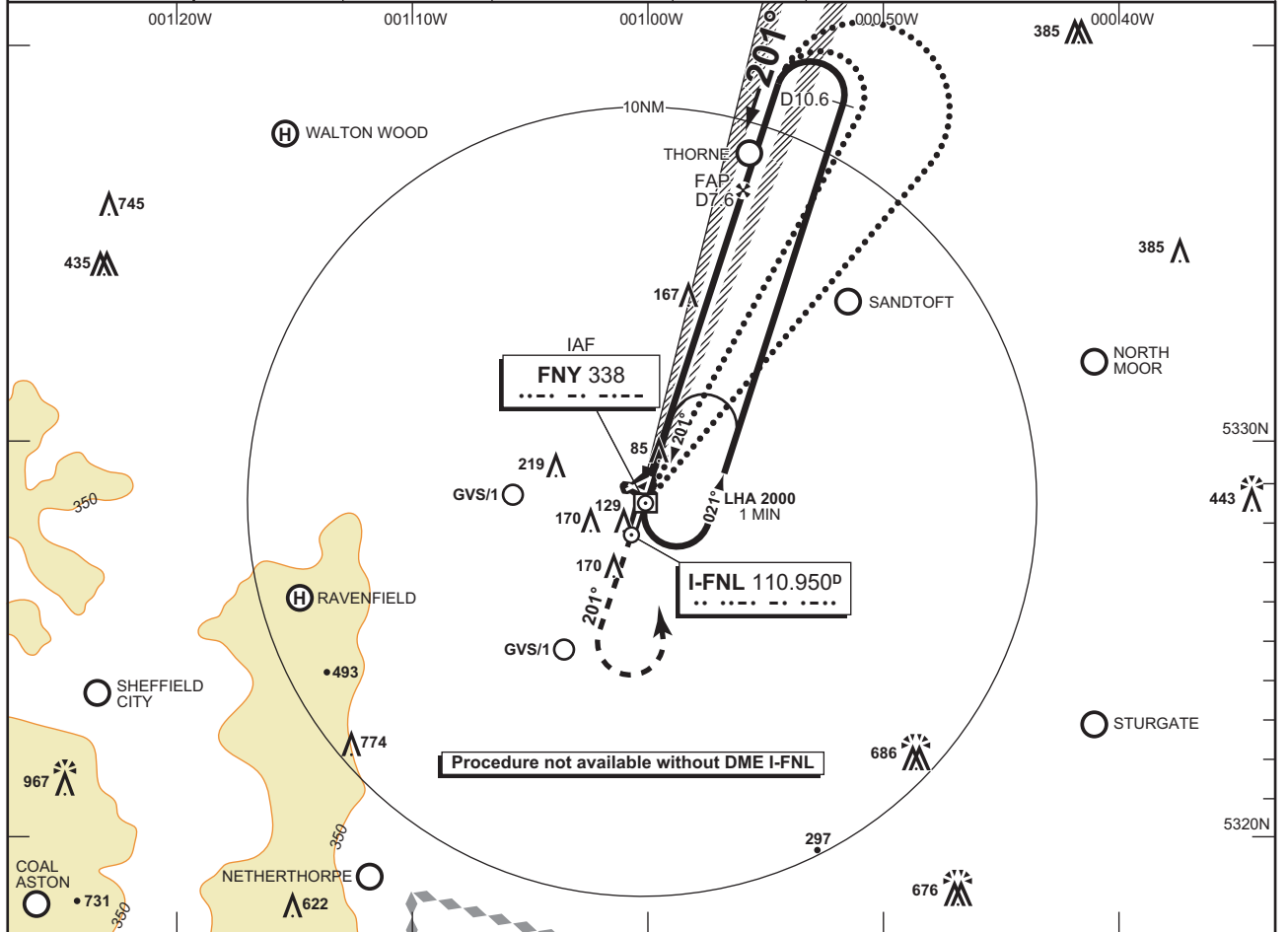
DONCASTER SHEFFIELD

ILS/DME/NDB(L) RWY 20

I-FNL 110.950/FNY 338

AD ELEV 55FT	THR ELEV 26FT	TRANSITION ALT 3000	VAR 3°W
ATIS 134.950	APPROACH 126.225	RADAR 126.225, 129.050	TOWER 128.775

MSA 25NM NDB(L) FNY



DME I-FNL is zero ranged to the THR RWY 20.

RECOMMENDED PROFILE				RATE OF DESCENT	OCA (OCH)		VM(C) OCA (OCH AAL)	
GLIDE PATH 3°, 318FT/NM					CAT I		TOTAL AREA	
DME I-FNL	ALT/HGT	G/S KT	FT/MIN	A	B	C	D	
7	2310 (2284)	160	850	186 (160)	194 (168)	203 (177)	211 (185)	480 (425)
6	1990 (1964)	140	740	480 (425)	520 (465)	760 (705)	760 (705)	
5	1670 (1644)	120	640					
4	1350 (1324)	100	530					
3	1030 (1004)	80	420					
2	710 (684)							
1	390 (364)							

ALTERNATIVE PROCEDURE
 From overhead NDB(L) FNY (IAF) **not below 3500(3474)** fly outbound on NDB(L) QDR 032° (CAT A,B) or NDB(L) QDR 043° (CAT C,D) descending to **2500(2474)**. At I-FNL D10.6 turn left to establish on the localizer then continue as for main procedure

NOTE Aircraft will normally be required to hold not lower than **3500**. Lowest altitude to commence procedure from hold is **2500**.