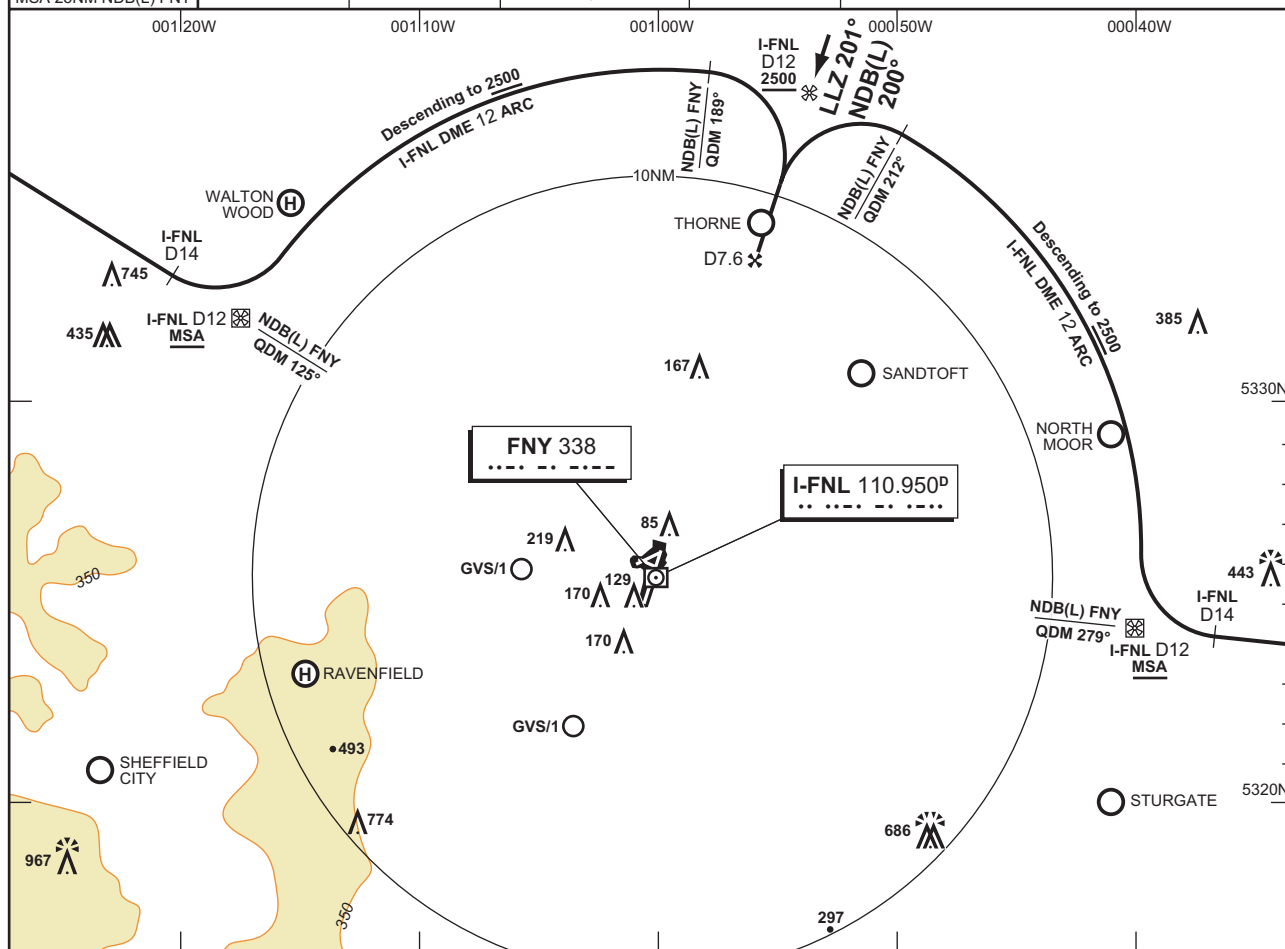
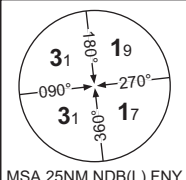


**EGCN**  
CAT A,B,C,D

**DONCASTER SHEFFIELD**  
**DIRECT ARRIVALS**  
**RWY 20**

AD ELEV <b>55FT</b>	THR ELEV <b>26FT</b>	TRANSITION ALT <b>3000</b>	VAR <b>3°W</b>
------------------------	-------------------------	-------------------------------	-------------------

ATIS <b>134.950</b>	APPROACH <b>126.225</b>	RADAR <b>126.225, 129.050</b>	TOWER <b>128.775</b>
------------------------	----------------------------	----------------------------------	-------------------------



**DIRECT ARRIVALS FROM THE NORTHWEST**  
Fly towards NDB(L) FNY **not below MSA**. At I-FNL DME 14 turn left to establish on I-FNL DME 12 arc clockwise. Once established on the I-FNL DME 12 arc and north of NDB(L) FNY QDM 125° descend to **2500**. At NDB(L) FNY QDM 189° turn right to establish on the LLZ/FAT then continue as for main procedure.

**DIRECT ARRIVALS FROM THE SOUTHEAST**  
Fly towards NDB(L) FNY **not below MSA**. At I-FNL DME 14 turn right to establish on I-FNL DME 12 arc anticlockwise. Once established on the I-FNL DME 12 arc and north of NDB(L) FNY QDM 279° descend to **2500**. At NDB(L) FNY QDM 212° turn left to establish on the LLZ/FAT then continue as for main procedure.